

CBSE Class 12 physics
Important Questions
Chapter 7
Alternating Current

1 Mark Questions

1. Power factor of an a.c. circuit is 0.5. What will be the phase difference between voltage and current in the circuit?

Ans.

$$\cos \phi = 0.5 = \frac{1}{2}$$

$$\phi = 60^\circ$$

Hence the phase difference is 60°

2. Weber is the unit of which physical quantity? Hence define it?

Ans. weber is the SI unit of magnetic flux. The weber is the magnetic flux that, linking a circuit of one turn, would produce in it an electromotive force of 1 volt if it were reduced to zero at a uniform rate in 1 second.

3. Two identical loops, one of copper and another of aluminum are rotated with the same speed in the same magnetic field. In which case, the induced

(a) emf.

(b) current will be more and why?

Ans. The induced emf will be same in both the loops but induced current will be more in copper loop because its resistance is less.

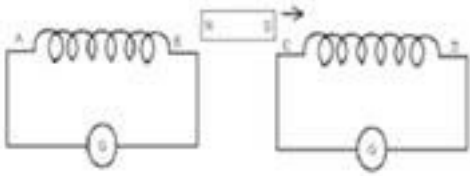
4. A transformer cannot be used to step up d.c. voltage?

Ans. When a d.c voltage source is applied across the primary of the transformer, the current in the primary coil remains constant. Hence there is no change in the magnetic flux linked with the secondary. Therefore the voltage across the secondary coil is zero. Thus a transformer can't step up dc voltage.



2 Mark Questions

1. Magnet is moved in the direction indicated by an arrow between two coil AB and CD as shown in the figure. Suggest the direction of current in each coil.



Ans. (1) Total impedance of the circuit

$$Z = \sqrt{R^2 + (X_L - X_C)^2}$$

$$(2) f = \frac{1}{2\pi\sqrt{LC}}$$

2. How does the self induction of a coil change when?

(1) The number of turns in a coil is decreased

(2) An iron rod is introduced into it. Justify.

Ans. $L = 2\text{H}$, $C = 32 \mu\text{F} = 32 \times 10^{-6}\text{F}$, $R = 10 \Omega$

$$\omega r = \frac{1}{\sqrt{LC}} = \frac{1}{\sqrt{2 \times 32 \times 10^{-6}}}$$

$\omega r = 125 \text{ rad/sec}$.

ϕ - Value of the circuit

$$\phi = \frac{1}{R} \sqrt{\frac{L}{C}} = \frac{1}{10} \sqrt{\frac{2}{32 \times 10^{-6}}}$$

$$\Rightarrow \phi = 25$$



3. A coil of inductance L , a capacitor of capacitance C and a resistor of resistance R are all put in series with an alternating source of emf $E = (E_0 \sin \omega t)$. Write an expression for the

(1) Total impedance of the circuit

(2) Frequency of the source emf for which the current carrying circuit will show resonance.

Ans. (1) Total impedance of the circuit

$$Z = \sqrt{R^2 + (X_L - X_C)^2}$$

$$(2) f = \frac{1}{2\pi\sqrt{LC}}$$

4. Obtain the resonant frequency ω_r of series LCR circuit with $L = 2$ H, $C = 32 \mu\text{F}$ and $R = 10 \Omega$. What is the ϕ - value of this circuit?

Ans. $L = 2\text{H}$, $C = 32 \mu\text{F} = 32 \times 10^{-6} \text{F}$, $R = 10 \Omega$

$$\omega_r = \frac{1}{\sqrt{LC}} = \frac{1}{\sqrt{2 \times 32 \times 10^{-6}}}$$

$\omega_r = 125 \text{ rad/sec}$.

ϕ - Value of the circuit

$$\phi = \frac{1}{R} \sqrt{\frac{L}{C}} = \frac{1}{10} \sqrt{\frac{2}{32 \times 10^{-6}}}$$

$$\Rightarrow \phi = 25$$

5. A 100Ω resistor is connected to a 220 V, 50 Hz ac supply.

(a) What is the rms value of current in the circuit?

(b) What is the net power consumed over a full cycle?

Ans. Resistance of the resistor, $R = 100 \Omega$

Supply voltage, $V = 220 \text{ V}$

Frequency, $\nu = 50 \text{ Hz}$

(a) The rms value of current in the circuit is given as:

$$I = \frac{V}{R}$$
$$= \frac{220}{100} = 2.20 \text{ A}$$

(b) The net power consumed over a full cycle is given as:

$$P = VI$$
$$= 220 \times 2.2 = 484 \text{ W}$$

6. (a) The peak voltage of an ac supply is 300 V. What is the rms voltage?

(b) The rms value of current in an ac circuit is 10 A. What is the peak current?

Ans. (a) Peak voltage of the ac supply, $V_0 = 300 \text{ V}$

Rms voltage is given as:

$$V = \frac{V_0}{\sqrt{2}}$$
$$= \frac{300}{\sqrt{2}} = 212.1 \text{ V}$$

(b) The rms value of current is given as:

$$I = 10 \text{ A}$$

Now, peak current is given as:

$$I_0 = \sqrt{2}I$$
$$= 10\sqrt{2} = 14.14 \text{ A}$$

7. A 44 mH inductor is connected to 220 V, 50 Hz ac supply. Determine the rms value of the current in the circuit.

Ans. Inductance of inductor, $L = 44 \text{ mH} = 44 \times 10^{-3} \text{ H}$

Supply voltage, $V = 220 \text{ V}$

Frequency, $\nu = 50 \text{ Hz}$

Angular frequency, $\omega = 2\pi\nu$

Inductive reactance, $X_L = \omega L = 2\pi\nu L = 2\pi \times 50 \times 44 \times 10^{-3} \Omega$

Rms value of current is given as: $I = \frac{V}{X_L}$

$$= \frac{200}{2\pi \times 50 \times 44 \times 10^{-3}} = 15.92 \text{ A}$$

Hence, the rms value of current in the circuit is 15.92 A.

8. A 60 μF capacitor is connected to a 110 V, 60 Hz ac supply. Determine the rms value of the current in the circuit.

Ans. Capacitance of capacitor, $C = 60 \mu\text{F} = 60 \times 10^{-6} \text{ F}$



Supply voltage, $V = 110 \text{ V}$

Frequency, $\nu = 60 \text{ Hz}$

Angular frequency, $\omega = 2\pi\nu$

$$\text{Capacitive reactance } X_c = \frac{1}{\omega C}$$

$$= \frac{1}{2\pi\nu C}$$

$$= \frac{1}{2 \times 3.14 \times 60 \times 60 \times 10^{-6}} \Omega^{-1}$$

Rms value of current is given as:

$$I = \frac{V}{X_c}$$

$$= 110 \times 2 \times 3.14 \times 60 \times 10^{-6} \times 60 = 2.49 \text{ A}$$

Hence, the rms value of current is 2.49 A.

9. Obtain the resonant frequency ω_r of a series LCR circuit with $L = 2.0 \text{ H}$, $C = 32 \mu\text{F}$ and $R = 10 \Omega$. What is the Q-value of this circuit?

Ans. Inductance, $L = 2.0 \text{ H}$

Capacitance, $C = 32 \mu\text{F} = 32 \times 10^{-6} \text{ F}$

Resistance, $R = 10 \Omega$

Resonant frequency is given by the relation,

$$(i)_r = \frac{1}{\sqrt{LC}}$$

$$= \frac{1}{\sqrt{2 \times 32 \times 10^{-6}}} = \frac{1}{8 \times 10^{-3}} = 125 \text{ s}^{-1}$$

Now, Q-value of the circuit is given as:

$$Q = \frac{1}{R} \sqrt{\frac{L}{C}}$$

$$= \frac{1}{10} \sqrt{\frac{2}{32 \times 10^{-6}}} = \frac{1}{10} \times \frac{1}{4 \times 10^{-3}} = 25$$

Hence, the Q-Value of this circuit is 25.

10. A charged $30 \mu\text{F}$ capacitor is connected to a 27 mH inductor. What is the angular frequency of free oscillations of the circuit?

Ans. Capacitance, $C = 30 \mu\text{F} = 30 \times 10^{-6} \text{ F}$

Inductance, $L = 27 \text{ mH} = 27 \times 10^{-3} \text{ H}$

Angular frequency is given as:

$$(i)_r = \frac{1}{\sqrt{LC}}$$

$$= 1.11 \times 10^3 \text{ rad/s}$$

Hence, the angular frequency of free oscillations of the circuit is $1.11 \times 10^3 \text{ rad/s}$.

11. Suppose the initial charge on the capacitor in Exercise 7.7 is 6 mC. What is the total energy stored in the circuit initially? What is the total energy at later time?

Ans. Capacitance of the capacitor, $C = 30 \mu\text{F} = 30 \times 10^{-6} \text{ F}$

Inductance of the inductor, $L = 27 \text{ mH} = 27 \times 10^{-3} \text{ H}$

Charge on the capacitor, $Q = 6 \text{ mC} = 6 \times 10^{-3} \text{ C}$

Total energy stored in the capacitor can be calculated by the relation,

$$E = \frac{1}{2} \frac{Q^2}{C}$$
$$= \frac{1}{2} \times \frac{(6 \times 10^{-3})^2}{30 \times 10^{-6}}$$
$$= \frac{6}{10} = 0.6J$$

Total energy at a later time will remain the same because energy is shared between the capacitor and the inductor.

12. At a hydroelectric power plant, the water pressure head is at a height of 300 m and the water flow available is $100 \text{ m}^3 \text{ s}^{-1}$. If the turbine generator efficiency is 60% estimate the electric power available from the plant ($g = 9.8 \text{ m s}^{-2}$).

Ans. Height of water pressure head, $h = 300 \text{ m}$

Volume of water flow per second, $V = 100 \text{ m}^3/\text{s}$

Efficiency of turbine generator, $n = 60\% = 0.6$

Acceleration due to gravity, $g = 9.8 \text{ m/s}^2$

Density of water, $\rho = 10^3 \text{ kg/m}^3$

Electric power available from the plant = $\eta \times h\rho gV$

$$= 0.6 \times 300 \times 10^3 \times 9.8 \times 100$$

$$= 176.4 \times 10^6 \text{ W}$$

$$= 176.4 \text{ MW}$$

13. A power transmission line feeds input power at 2300 V to a stepdown transformer with its primary windings having 4000 turns. What should be the number of turns in

the secondary in order to get output power at 230 V?

Ans. Input voltage, $V_1 = 2300$

Number of turns in primary coil, $n_1 = 4000$

Output voltage, $V_2 = 230$ V

Number of turns in secondary coil = n_2

Voltage is related to the number of turns as:

$$\frac{V_1}{V_2} = \frac{n_1}{n_2}$$

$$\frac{2300}{230} = \frac{4000}{n_2}$$

$$n_2 = \frac{4000 \times 230}{2300} = 400$$

Hence, there are 400 turns in the second winding.

3 Mark Questions

1. A variable frequency 230V alternating voltage source is connected across a series combination of $L = 5\text{H}$, $C = 80 \mu\text{F}$ and $R = 40 \Omega$. Calculate

(a) Angular frequency of the source which drives the circuit in resonance

(b) Impedance of the circuit

(c) Amplitude of current at resonance.



Ans. Power factor of circuit A

$$\cos \phi_A = \frac{R}{\sqrt{R^2 + X_L^2}} = \frac{R}{\sqrt{R^2 + 9R^2}}$$

$$\cos \phi_A = \frac{R}{\sqrt{10R^2}}$$

$$\cos \phi_A = \frac{1}{\sqrt{10}} \text{ ---(1)}$$

Power factor of circuit B

$$\cos \phi_B = \frac{R}{\sqrt{R^2 + (X_L - X_C)^2}} = \frac{R}{\sqrt{R^2 + (3R - R)^2}}$$

$$\cos \phi_B = \frac{R}{\sqrt{R^2 + 4R^2}} = \frac{R}{\sqrt{5R^2}}$$

$$\cos \phi_B = \frac{1}{\sqrt{5}} \text{ ---(2)}$$

$$\frac{\cos \phi_B}{\cos \phi_A} = \frac{\frac{1}{\sqrt{5}}}{\frac{1}{\sqrt{10}}}$$

$$\cos \phi_B : \cos \phi_A = \sqrt{2}$$

2. Show that in the free oscillations of an LC circuit, the sum of the energies stored in the capacitor and the inductor is constant in time?

Ans. Energy stored in capacitor

$$= \frac{1}{2} \frac{q_0^2}{C} (\because q = q_0 \cos \omega t)$$

$$= \frac{1}{2} q_0^2 \cos^2 \omega t \quad \text{---(1)}$$

$$\text{Energy stored in an inductor} = \frac{1}{2} LI^2$$

$$\Rightarrow E = \frac{1}{2} L \left(\frac{dq}{dt} \right)^2 \left(I = I_0 \cos \omega t \because I = \frac{dq}{dt} \right)$$

$$E = \frac{1}{2} L \left[\frac{d}{dt} (q_0 \cos \omega t) \right]^2$$

$$E = \frac{1}{2} L q_0^2 \omega^2 \sin^2 \omega t$$

$$E = \frac{q_0^2}{2} \sin^2 \omega t \cancel{L} \left(\frac{1}{\cancel{LC}} \right) \left(\because \omega^2 = \frac{1}{LC} \right)$$

$$E = \frac{q_0^2}{2C} \sin^2 \omega t$$

Combining (1) & (2) to get total amount of energy

$$E = \frac{q_0^2}{2C} [\sin^2 \omega t + \cos^2 \omega t]$$

$$\text{(Constant)} \quad E = \frac{q_0^2}{2C}$$

3. Define mutual inductance? What is its S.I. unit? Write the expression for the mutual inductance between a pair of circular coils of radius r and R ($R > r$).

Ans. It is defined as the phenomenon of inducing emf in a coil due to the rate of change of current in a nearby coil. Its S.I. unit is Henry (H).



Let two coaxial concentric

coils of radius r and R ($R > r$)

be placed in air. If current

I_2 flows through R , the magnetic flux gets linked up with secondary coil (coils of radius r) & is given by

$$\phi_s = BA = \left(\frac{\mu_0 I_2}{2R} \right) (\pi r^2)$$

$$\phi_s = \frac{\mu_0 \pi r^2 I_2}{2R} \text{ ---(1)}$$

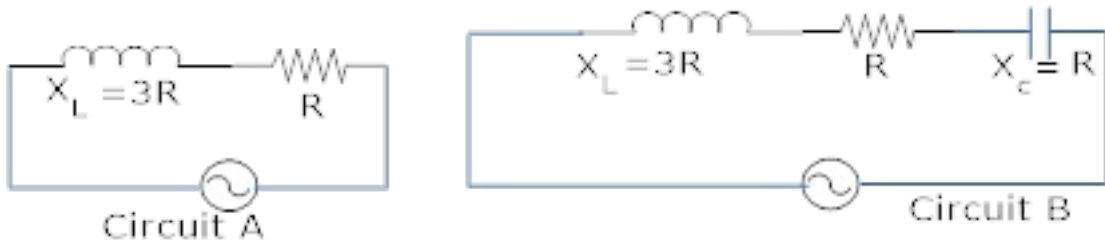
$$\text{Also } \phi_s = MI_2 \text{ ---(2)}$$

Combining equation (1) & (2)

$$MI_2 = \frac{\mu_0 \pi r^2 I_2}{2R}$$

$$M = \frac{\mu_0 \pi r^2}{2R}$$

4. Figure shows two electric circuits A and B. calculate the ratio of power factor of the circuit B to the power factor of the circuit A?



Ans. Power factor of circuit A

$$\cos \phi_A = \frac{R}{\sqrt{R^2 + X_L^2}} = \frac{R}{\sqrt{R^2 + 9R^2}}$$

$$\cos \phi_A = \frac{R}{\sqrt{10R^2}}$$

$$\cos \phi_A = \frac{1}{\sqrt{10}} \text{ ----(1)}$$

Power factor of circuit B

$$\cos \phi_B = \frac{R}{\sqrt{R^2 + (X_L - X_C)^2}} = \frac{R}{\sqrt{R^2 + (3R - R)^2}}$$

$$\cos \phi_B = \frac{R}{\sqrt{R^2 + 4R^2}} = \frac{R}{\sqrt{5R^2}}$$

$$\cos \phi_B = \frac{1}{\sqrt{5}} \text{ ----(2)}$$

$$\frac{\cos \phi_B}{\cos \phi_A} = \frac{\frac{1}{\sqrt{5}}}{\frac{1}{\sqrt{10}}}$$

$$\cos \phi_B : \cos \phi_A = \sqrt{2}$$

5. A horizontal straight wire 10 m long is extending along east and west and is falling with a speed of 5.0 m/s at right angles to the horizontal component of the earth's magnetic field of strength $0.30 \times 10^{-4} \text{ wb/m}^2$.

(a) What is the instantaneous value of the emf induced in the wire?

(b) What is the direction of the emf?

(c) Which end of the wire is at the higher potential?

Ans. length of the wire, $l = 10\text{m}$

$$v = 5.0\text{m/s.}$$

$$B_H = 0.30 \times 10^{-4} \text{ wb/m}^2$$

(a) Induced emf $E = B_H l v$

$$E = 0.30 \times 10^{-4} \times 10 \times 5$$

$$E = 1.5 \times 10^{-3} \text{ V}$$

(b) Induced emf sets up from west to east.

(c) The potential will be more for eastern end.

6. A circular coil of N turns and radius r is kept normal to a magnetic field, given by $B = B_0 \cos \omega t$. Deduce an expression for emf. Induced in the coil. State the rule which helps to detect the direction of induced current.

Ans. $B = B_0 \cos \omega t$ (given)

$$E = \frac{-Nd\phi}{dt}$$

$$E = \frac{-NAd}{dt} (B_0 \cos wt)$$

$$E = -NAB_0(-\sin wt)(wt)$$

$$E = NAB_0(-\sin wt)(w)$$

$$E = NAB_0 w \sin wt$$

$$(A = \pi R^2)$$

$$E = NB_0 \pi R^2 w \sin wt$$

Lenz's law is used to find the direction of induced emf. It states the direction of induced emf is opposite to the cause producing the induced emf.

7. In Exercises 7.3 and 7.4, what is the net power absorbed by each circuit over a complete cycle. Explain your answer.

Ans. In the inductive circuit,

Rms value of current, $I = 15.92 \text{ A}$

Rms value of voltage, $V = 220 \text{ V}$

Hence, the net power absorbed can be obtained by the relation,

$$P = VI \cos \phi$$

Where,

ϕ = Phase difference between V and I

For a pure inductive circuit, the phase difference between alternating voltage and current is 90° i.e., $\phi = 90^\circ$.

Hence, $P = 0$ i.e., the net power is zero.

In the capacitive circuit,

Rms value of current, $I = 2.49$ A

Rms value of voltage, $V = 110$ V

Hence, the net power absorbed can be obtained as:

$$P = VI \cos \phi$$

For a pure capacitive circuit, the phase difference between alternating voltage and current is 90° i.e., $\phi = 90^\circ$.

Hence, $P = 0$ i.e., the net power is zero.

8. A series LCR circuit with $R = 20 \Omega$, $L = 1.5$ H and $C = 35 \mu F$ is connected to a variable-frequency 200 V ac supply. When the frequency of the supply equals the natural frequency of the circuit, what is the average power transferred to the circuit in one complete cycle?

Ans. At resonance, the frequency of the supply power equals the natural frequency of the given LCR circuit.

Resistance, $R = 20 \Omega$

Inductance, $L = 1.5$ H

Capacitance, $C = 35 \mu F = 35 \times 10^{-6} F$

AC supply voltage to the LCR circuit, $V = 200$ V

Impedance of the circuit is given by the relation,

$$Z = \sqrt{R^2 + \left(\omega L - \frac{1}{\omega C} \right)^2}$$

At resonance, $\omega L = \frac{1}{\omega C}$ s

$$\therefore Z = R = 20\Omega$$

Current in the circuit can be calculated as:

$$I = \frac{V}{Z}$$
$$= \frac{200}{20} = 10A$$

Hence, the average power transferred to the circuit in one complete cycle = VI

$$= 200 \times 10 = 2000 \text{ W.}$$

9. A radio can tune over the frequency range of a portion of MW broadcast band: (800 kHz to 1200 kHz). If its LC circuit has an effective inductance of $200 \mu\text{H}$, what must be the range of its variable capacitor?

[Hint: For tuning, the natural frequency i.e., the frequency of free oscillations of the LC circuit should be equal to the frequency of the radio wave.]

Ans. The range of frequency (ν) of a radio is 800 kHz to 1200 kHz.

Lower tuning frequency, $\nu_1 = 800 \text{ kHz} = 800 \times 10^3 \text{ Hz}$

Upper tuning frequency, $\nu_2 = 1200 \text{ kHz} = 1200 \times 10^3 \text{ Hz}$

Effective inductance of circuit $L = 200 \mu\text{H} = 200 \times 10^{-6} \text{ H}$

Capacitance of variable capacitor for ν_1 is given as:

$$C1 = \frac{1}{(\omega_1)^2 L}$$

Where,

ω_1 = Angular frequency for capacitor $C1$

$$= 2\pi V_1 = 2\pi \times 800 \times 10^3 \text{ radS}^{-1}$$

$$\therefore C_1 = \frac{1}{(2\pi \times 800 \times 10^3)^2 \times 200 \times 10^{-6}}$$

$$= 1.9809 \times 10^{-10} \text{ F} = 198.1 \text{ pF}$$

Capacitance of variable capacitor for v_2 ,

$$C2 = \frac{1}{(\omega_2)^2 L}$$

Where,

ω_2 = Angular frequency for capacitor C_2

$$= 2\pi v_2 = 2\pi \times 1200 \times 10^3 \text{ radS}^{-1}$$

$$\therefore C_2 = \frac{1}{(2\pi \times 1200 \times 10^3)^2 \times 200 \times 10^{-6}}$$

$$= 88.04 \text{ pF}$$

Hence, the range of the variable capacitor is from 88.04 pF to 198.1 pF.

10. Obtain the resonant frequency and Q-factor of a series LCR circuit with $L = 3.0 \text{ H}$, $C = 27 \mu\text{F}$, and $R = 7.4 \Omega$. It is desired to improve the sharpness of the resonance of the circuit by reducing its 'full width at half maximum' by a factor of 2. Suggest a suitable way.

Ans. Inductance, $L = 3.0 \text{ H}$

Capacitance, $C = 27 \mu\text{F} = 27 \times 10^{-6} \text{ F}$

Resistance, $R = 7.4 \Omega$

At resonance, angular frequency of the source for the given LCR series circuit is given as:

$$\begin{aligned} \omega_r &= \frac{1}{\sqrt{LC}} \\ &= \frac{1}{\sqrt{3 \times 27 \times 10^{-6}}} = \frac{10^3}{9} = 111.11 \text{ rad } S^{-1} \end{aligned}$$

Q-factor of the series:

$$= \frac{111.11 \times 3}{7.4} = 45.0446$$

To improve the sharpness of the resonance by reducing its full width at half maximum' by a factor of 2 without changing ω_r , we need to reduce R to half i.e.,

$$\text{Resistance} = \frac{R}{2} = \frac{7.4}{2} = 3.7 \Omega$$

5 Mark Questions

1. (a) Why is electric power generally transmitted over long distances at high a.c. voltage?

(b) An a.c. generator consist of a coil of 50 turns, area $2.5m^2$ rotating at an angular speed of 60 rad/s in uniform magnetic field of $B = 0.3 \text{ T}$ between two fixed pole pieces. Given $R = 500 \Omega$.

(i) Find the maximum current drawn from the generator?

(ii) What will be the orientation of the coil wrt. B to have max and zero magnetic flux?

Would the generator work if the coils were stationary and instead the pole pieces rotated together with the same speed?

Ans. (a) Electric power is transmitted over long distances at high a.c. voltage so that small current flows through the transmission line because it reduces the power loss (I^2R).

(b) $n = 50$, $A = 2.5m^2$, $w = 60 \text{ rad/s}$ $B = 0.3 \text{ T}$ $R = 500 \Omega$

(i) $E_o = nABw$

$$E_o = 50 \times 2.5 \times 0.3 \times 60$$

$$E_o = 2250 \text{ V}$$

$$\Rightarrow I_o = \frac{E_o}{R} = \frac{2250}{500}$$

$$I_o = 4.5 \text{ A}$$

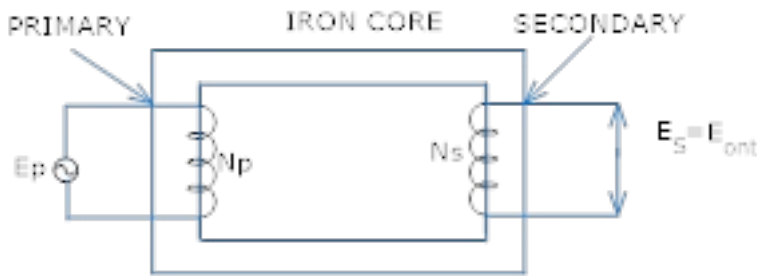
(ii) Magnetic flux will be maximum if the coil is in the vertical position and it will be zero when the coil is in the horizontal position.

(iii) The generator will work whenever there is relative motion between the coil and magnet.



2. Explain with the help of labeled diagram, the principle construction and working of a transformer?

Ans. Principle – A transformer converts low a.c. voltage to high a.c. voltage or vice – versa. It is based on the principle of mutual induction i.e. emf is induced in a coil when a changing current is produced in the neighboring coil



Construction – It consists of two coils wound on a soft iron core. One of the coils called the primary is connected to an a.c. source. The other coil called the secondary is connected to the load.

Working – When an alternating emf is applied across the primary coil the input voltage keeps on changing with time due to which magnetic flux through the primary coil changes. This changing magnetic flux gets linked up with the secondary coil also which in turn produces induced emf in the secondary coil.

$$E_s = N_s \frac{d\phi_s}{dt} \text{ -----(1)}$$

$$E_p = N_p \frac{d\phi_p}{dt} \text{ -----(2)}$$

If all the magnetic flux generated in the primary coil gets linked up with the secondary coil

i.e. $\phi_s = \phi_p$

Then eq. (1) & (2) becomes



$$\frac{E_s}{E_p} = \frac{N_s}{N_p}$$

$$E_s = \frac{N_s}{N_p} E_p \text{ ----(3)}$$

$$\frac{N_s}{N_p} = K \text{ Is called transformation ratio}$$

$k > 1$ for step up transformer

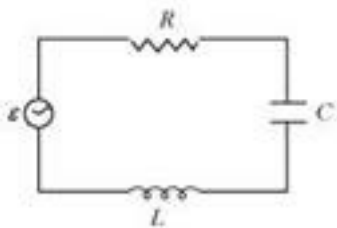
$k < 1$ for step down transformer

if there is no loss of energy

$$E_s I_s = E_p I_p$$

$$\frac{E_s}{E_p} = \frac{I_p}{I_s}$$

3. Figure 7.21 shows a series LCR circuit connected to a variable frequency 230 V source. $L = 5.0 \text{ H}$, $C = 80 \mu\text{F}$, $R = 40 \Omega$



- Determine the source frequency which drives the circuit in resonance.**
- Obtain the impedance of the circuit and the amplitude of current at the resonating frequency.**
- Determine the rms potential drops across the three elements of the circuit. Show that the potential drop across the LC combination is zero at the resonating frequency.**

Ans. Inductance of the inductor, $L = 5.0 \text{ H}$

Capacitance of the capacitor, $C = 80 \mu\text{H} = 80 \times 10^{-6} \text{ F}$

Resistance of the resistor, $R = 40 \Omega$

Potential of the variable voltage source, $V = 230 \text{ V}$

(a) Resonance angular frequency is given as:

$$\begin{aligned} (i)_R &= \frac{1}{\sqrt{LC}} \\ &= \frac{1}{\sqrt{5 \times 80 \times 10^{-6}}} = \frac{10^3}{20} = 50 \text{ rad/s} \end{aligned}$$

Hence, the circuit will come in resonance for a source frequency of 50 rad/s.

(b) Impedance of the circuit is given by the relation,

$$Z = \sqrt{R^2 + \left((i)L - \frac{1}{(i)C} \right)^2}$$

At resonance,

$$(i)L = \frac{1}{(i)C}$$

$$\therefore Z = R = 40 \Omega$$

Amplitude of the current at the resonating frequency is given as: $I_0 = \frac{V_0}{Z}$

Where,

V_0 = Peak voltage

$$= \sqrt{2V}$$

$$\begin{aligned} \therefore I_0 &= \frac{\sqrt{2V}}{Z} \\ &= \frac{\sqrt{2} \times 230}{40} = 8.13 \end{aligned}$$

Hence, at resonance, the impedance of the circuit is 40Ω and the amplitude of the current is 8.13 A.

(c) Rms potential drop across the inductor,

$$(V_L)_{rms} = I \times \omega_R L$$

Where,

I = rms current

$$= \frac{I_0}{\sqrt{2}} = \frac{\sqrt{2V}}{\sqrt{2Z}} = \frac{230}{40} A$$

$$\therefore (V_L)_{rms} = \frac{230}{40} \times 50 \times 5 = 1437.5V$$

Potential drop across the capacitor,

$$(V_L)_{rms} = I \times \frac{1}{(i)_R C}$$

$$= \frac{230}{40} \times \frac{1}{50 \times 80 \times 10^{-6}} = 1437.5V$$

Potential drop across the resistor,

$$(VR)_{rms} = IR$$

$$= \frac{230}{40} \times 40 = 230 V$$

Potential drop across the LC combination,

$$V_{LC} = I \left((i)_R L - \frac{1}{(i)_R C} \right)$$

At resonance, $(i)_R L - \frac{1}{(i)_R C}$

$\therefore V_{LC} = 0$

Hence, it is proved that the potential drop across the LC combination is zero at resonating frequency.

4. An LC circuit contains a 20 mH inductor and a $50 \mu F$ capacitor with an initial charge of 10 mC. The resistance of the circuit is negligible. Let the instant the circuit is closed be $t = 0$.

- (a) What is the total energy stored initially? Is it conserved during LC oscillations?**
- (b) What is the natural frequency of the circuit?**
- (c) At what time is the energy stored**
 - (i) completely electrical (i.e., stored in the capacitor)?**
 - (ii) completely magnetic (i.e., stored in the inductor)?**
- (d) At what times is the total energy shared equally between the inductor and the capacitor?**
- (e) If a resistor is inserted in the circuit, how much energy is eventually dissipated as heat?**

Ans. Inductance of the inductor, $L = 20 \text{ mH} = 20 \times 10^{-3} \text{ H}$

Capacitance of the capacitor, $C = 50 \mu F = 50 \times 10^{-6} \text{ F}$

Initial charge on the capacitor, $Q = 10 \text{ mC} = 10 \times 10^{-3} \text{ C}$

(a) Total energy stored initially in the circuit is given as:



$$E = \frac{1}{2} \frac{Q^2}{C}$$

$$= \frac{(10 \times 10^{-3})^2}{2 \times 50 \times 10^{-6}} = 1J$$

Hence, the total energy stored in the LC circuit will be conserved because there is no resistor connected in the circuit.

(b) Natural frequency of the circuit is given by the relation,

$$v = \frac{1}{2\pi\sqrt{LC}}$$

$$= \frac{1}{2\pi\sqrt{20 \times 10^{-3} \times 50 \times 10^{-6}}}$$

$$= \frac{10^3}{2\pi} = 159.24Hz$$

Natural angular frequency,

$$(i)_r = \frac{1}{\sqrt{LC}}$$

Hence, the natural frequency of the circuit is 103 rad/s.

(c) (i) For time period ($T = \frac{1}{V} = \frac{1}{159.24} = 6.28ms$), total charge on the capacitor at time t ,

$$Q' = Q \cos \frac{2\pi}{T} t$$

For energy stored is electrical, we can write $Q' = Q$.

Hence, it can be inferred that the energy stored in the capacitor is completely electrical at time,

$$t = 0, \frac{T}{2}, T, \frac{3T}{2}, \dots$$



(ii) Magnetic energy is the maximum when electrical energy, Q^2 is equal to 0.

Hence, it can be inferred that the energy stored in the capacitor is completely magnetic at time,

$$t = \frac{T}{4}, \frac{3T}{4}, \frac{5T}{4}, \dots$$

(d) Q^1 = Charge on the capacitor when total energy is equally shared between the capacitor and the inductor at time t .

When total energy is equally shared between the inductor and capacitor, the energy stored in the capacitor = $\frac{1}{2}$ (maximum energy).

$$\Rightarrow \frac{1}{2} \cdot \frac{(Q^1)^2}{C} = \frac{1}{2} \left(\frac{1}{2} \frac{Q^2}{C} \right) = \frac{1}{4} \frac{Q^2}{C}$$

$$Q^1 = \frac{Q}{\sqrt{2}}$$

$$Q^1 = Q \cos \frac{2\pi}{T} t.$$

$$\frac{Q}{\sqrt{2}} = Q \cos \frac{2\pi}{T} t$$

$$\cos \frac{2\pi}{T} t = \frac{1}{\sqrt{2}} = \cos(2n+1) \frac{\pi}{4} :$$

where $n = 0, 1, 2, \dots$

$$t = (2n+1) \frac{T}{8}$$

Hence, total energy is equally shared between the inductor and the capacity at time,

$$t = \frac{T}{8}, \frac{3T}{8}, \frac{5T}{8}, \dots$$

(e) If a resistor is inserted in the circuit, then total initial energy is dissipated as heat energy in the circuit. The resistance damps out the LC oscillation.

5. A coil of inductance 0.50 H and resistance 100 Ω is connected to a 240 V, 50 Hz ac supply.

(a) What is the maximum current in the coil?

(b) What is the time lag between the voltage maximum and the current maximum?

Ans. Inductance of the inductor, $L = 0.50$ H

Resistance of the resistor, $R = 100$ Ω

Potential of the supply voltage, $V = 240$ V

Frequency of the supply, $\nu = 50$ Hz

(a) Peak voltage is given as:

$$\begin{aligned}V_0 &= \sqrt{2}V \\ &= \sqrt{2} \times 240 = 339.41V\end{aligned}$$

Angular frequency of the supply,

$$\begin{aligned}\omega &= 2\pi\nu \\ &= 2\pi \times 50 = 100\pi \text{ rad/s}\end{aligned}$$

Maximum current in the circuit is given as:

$$\begin{aligned}I_0 &= \frac{V_0}{\sqrt{R^2 + (\omega L)^2}} \\ &= \frac{339.41}{\sqrt{(100)^2 + (100\pi)^2 (0.50)^2}} = 1.82A\end{aligned}$$

(b) Equation for voltage is given as:

$V = V_0 \cos \omega t$ Equation for current is given as:

$I = I_0 \cos (\omega t - \Phi)$ Where,

Φ = Phase difference between voltage and current

At time, $t = 0$.

$V = V_0$ (voltage is maximum)

For $\omega t - \Phi = 0$ i.e., at time $t = \frac{\Phi}{\omega}$,

$I = I_0$ (current is maximum)

Hence, the time lag between maximum voltage and maximum current is $t = \frac{\phi}{\omega}$.

Now, phase angle ϕ is given by the relation,

$$\begin{aligned}\tan \phi &= \frac{L}{R} \\ &= \frac{2\pi \times 50 \times 0.5}{100} = 1.57\end{aligned}$$

$$\phi = 57.5^\circ = \frac{57.5\pi}{180} \text{ rad}$$

$${}^{(i)} t = \frac{57.5\pi}{180}$$

$$1 = \frac{57.5}{180 \times 2\pi \times 50}$$

$$= 3.19 \times 10^{-3} \text{ S}$$

$$= 3.2 \text{ ms}$$

Hence, the time lag between maximum voltage and maximum current is 3.2 ms.

6. Obtain the answers (a) to (b) in Exercise 7.13 if the circuit is connected to a high frequency supply (240 V, 10 kHz). Hence, explain the statement that at very high frequency, an inductor in a circuit nearly amounts to an open circuit. How does an inductor behave in a dc circuit after the steady state?

Ans. Inductance of the inductor,

$$L = 0.5 \text{ H}$$

Resistance of the resistor, $R = 100 \ \Omega$

Potential of the supply voltages,

$$V = 240 \text{ V}$$

Frequency of the supply,

$$\nu = 10 \text{ kHz} = 10^4 \text{ Hz}$$

Angular frequency,

$$\omega = 2\pi\nu = 2\pi \times 10^4 \text{ rad/s}$$

(a) Peak voltage,

$$V_0 = \sqrt{2} \times V = 240\sqrt{2} \text{ V}$$

Maximum current,

$$I_0 = \frac{V_0}{\sqrt{R^2 + (\omega L)^2}}$$
$$= \frac{240\sqrt{2}}{\sqrt{(100)^2 + (2\pi \times 10^4)^2 \times (0.50)^2}} = 1.1 \times 10^{-2} \text{ A}$$

(b) For phase difference ϕ , we have the relation:

$$\tan \phi = \frac{\omega L}{R}$$

$$\frac{2\pi \times 10^4 \times 0.5}{100} = 100\pi$$

$$\phi = 89.82^\circ = \frac{89.82\pi}{180} \text{ rad}$$

$$(i) t = \frac{89.82\pi}{180}$$

$$t = \frac{89.82\pi}{180 \times 2\pi \times 10^4} = 25 \mu\text{s}$$

It can be observed that I_0 is very small in this case. Hence, at high frequencies, the inductor amounts to an open circuit.

In a dc circuit, after a steady state is achieved, $\phi = 0$. Hence, inductor L behaves like a pure conducting object.

7. A $100 \mu\text{F}$ capacitor in series with a 40Ω resistance is connected to a 110 V, 60 Hz supply.

(a) What is the maximum current in the circuit?

(b) What is the time lag between the current maximum and the voltage maximum?

Ans. Capacitance of the capacitor, $C = 100 \mu\text{F} = 100 \times 10^{-6} \text{ F}$

Resistance of the resistor, $R = 40 \Omega$

Supply voltage, $V = 110 \text{ V}$

(a) Frequency of oscillations, $\nu = 60 \text{ Hz}$

Angular frequency, $(i) = 2\pi\nu = 2\pi \times 60 \text{ rad/s}$

For a RC circuit, we have the relation for impedance as:

$$Z = R^2 + \frac{1}{(i)^2 C^2} \text{ s}$$

$$\text{Peak voltage, } V_0 = V\sqrt{2} = 110\sqrt{2}V$$

Maximum current is given as:

$$\begin{aligned} I_0 &= \frac{V_0}{Z} \\ &= \frac{V_0}{\sqrt{R^2 + \frac{1}{(\omega)^2 C^2}}} \\ &= \frac{100\sqrt{2}}{\sqrt{(40)^2 + \frac{1}{(120\pi)^2 \times (10^{-4})^2}}} \\ &= \frac{110\sqrt{2}}{\sqrt{1600 + \frac{1}{(120\pi)^2}}} = 3.24A \end{aligned}$$

(b) In a capacitor circuit, the voltage lags behind the current by a phase angle of ϕ . This angle is given by the relation:

$$\begin{aligned} \frac{1}{(\omega)L} - (\omega)C &= 0 \\ \therefore \tan \phi &= \frac{\frac{1}{(\omega)C}}{R} = \frac{1}{(\omega)CR} \\ &= \frac{1}{12\pi \times 10^4 \times 40} = 0.6635 \\ \phi &= \tan^{-1}(0.6635) = 33.56 \\ &= \frac{33.56\pi}{180} \text{ rad} \end{aligned}$$

$$\therefore \text{Time lag} = \frac{\phi}{(i)}$$

$$= \frac{33.56\pi}{180 \times 120\pi} = 1.55 \times 10^{-3} \text{ S} = 1.55 \text{ ms}$$

Hence, the time lag between maximum current and maximum voltage is 1.55 ms.

8. Obtain the answers to (a) and (b) in Exercise 7.15 if the circuit is connected to a 110 V, 12 kHz supply? Hence, explain the statement that a capacitor is a conductor at very high frequencies. Compare this behavior with that of a capacitor in a dc circuit after the steady state.

Ans. Capacitance of the capacitor,

$$C = 100 \mu\text{F} = 100 \times 10^{-6} \text{ F}$$

Resistance of the resistor,

$$R = 40 \Omega$$

Supply voltage, $V = 110 \text{ V}$

Frequency of the supply,

$$\nu = 12 \text{ kHz} = 12 \times 10^3 \text{ Hz}$$

Angular Frequency,

$$\omega = 2\pi\nu = 2 \times \pi \times 12 \times 10^3$$

$$= 24\pi \times 10^3 \text{ rad/s}$$

Peak voltage,

$$V_0 = V\sqrt{2} = 110\sqrt{2} \text{ V}$$

Maximum current,

$$I_0 = \frac{V_0}{\sqrt{R^2 + \frac{1}{\omega^2 C^2}}}$$



$$= \frac{110\sqrt{2}}{\sqrt{(40)^2 + \frac{1}{(24\pi \times 10^3 \times 100 \times 10^{-6})^2}}}$$

$$= \frac{110\sqrt{2}}{\sqrt{1600 + \left(\frac{10}{24\pi}\right)^2}} = 3.9A$$

For an RC circuit, the voltage lags behind the current by a phase angle of ϕ given as:

$$\tan \phi = \frac{\frac{1}{(i)C}}{R} = \frac{1}{(i)CR}$$

$$= \frac{1}{24\pi \times 10^3 \times 100 \times 10^{-6} \times 40}$$

$$\tan \phi = \frac{1}{96\pi}$$

$$\therefore \phi = 0.2^\circ$$

$$= \frac{0.2\pi}{180} \text{ rad}$$

$$\therefore \text{timelag} = \frac{\phi}{(i)}$$

Hence, ϕ tends to become zero at high frequencies. At a high frequency, capacitor C acts as a conductor.

In a dc circuit, after the steady state is achieved, $\phi = 0$. Hence, capacitor C amounts to an open circuit.

9. Keeping the source frequency equal to the resonating frequency of the series LCR circuit, if the three elements, L, C and R are arranged in parallel, show that the total current in the parallel LCR circuit is minimum at this frequency. Obtain the current rms value in each branch of the circuit for the elements and source specified in Exercise 7.11 for this frequency.

Ans. An inductor (L), a capacitor (C), and a resistor (R) is connected in parallel with each other in a circuit where,

$$L = 5.0 \text{ H}$$

$$C = 80 \mu\text{F} = 80 \times 10^{-6} \text{ F}$$

$$R = 40 \Omega$$

Potential of the voltage source, $V = 230 \text{ V}$

Impedance (Z) of the given parallel LCR circuit is given as:

$$\frac{1}{Z} = \sqrt{\frac{1}{R^2} + \left(\frac{1}{\omega L} - \omega C\right)^2}$$

Where,

ω = Angular frequency

$$\text{At resonance, } \frac{1}{\omega L} - \omega C = 0$$

$$\therefore \omega = \frac{1}{\sqrt{LC}}$$

$$= \frac{1}{\sqrt{5 \times 80 \times 10^{-6}}} = 50 \text{ rad/s}$$

Hence, the magnitude of Z is the maximum at 50 rad/s. As a result, the total current is minimum.

Rms current flowing through inductor L is given as:

$$I_L = \frac{V}{\omega L}$$

$$= \frac{230}{50 \times 5} = 0.92 \text{ A}$$

Rms current flowing through capacitor C is given as:

$$I_c = \frac{V}{\frac{1}{C}} = CV$$

$$= 50 \times 80 \times 10^{-6} \times 230 = 0.92 A$$

Rms current flowing through resistor R is given as:

$$I_R = \frac{V}{R}$$

$$= \frac{230}{40} = 5.75 A$$

10. A circuit containing a 80 mH inductor and a 60 μF capacitor in series is connected to a 230 V, 50 Hz supply. The resistance of the circuit is negligible.

- Obtain the current amplitude and rms values.
- Obtain the rms values of potential drops across each element.
- What is the average power transferred to the inductor?
- What is the average power transferred to the capacitor?
- What is the total average power absorbed by the circuit? ['Average' implies 'averaged over one cycle'.]

Ans. Inductance,

$$L = 80 \text{ mH} = 80 \times 10^{-3} \text{ H}$$

Capacitance,

$$C = 60 \mu F = 60 \times 10^{-6} \text{ F}$$

Supply voltage, $V = 230 \text{ V}$

Frequency, $\nu = 50 \text{ Hz}$

Angular frequency,

$$\omega = 2\pi\nu = 100 \pi \text{ rad/s}$$

Peak voltage, $V_0 = V\sqrt{2} = 230\sqrt{2}V$

(a) Maximum current is given as:

$$\begin{aligned}
 I_0 &= \frac{V_0}{\left({}^{(i)}L - \frac{1}{(i)C} \right)} \\
 &= \frac{230\sqrt{2}}{\left(10\pi \times 80 \times 10^{-3} - \frac{1}{100\pi \times 60 \times 10^{-6}} \right)} \\
 &= \frac{230\sqrt{2}}{\left(8\pi - \frac{1000}{6\pi} \right)} = -11.63A
 \end{aligned}$$

The negative sign appears because ${}^{(i)}L < \frac{1}{(i)C}$.

Amplitude of maximum current, $|I_0| = 11.63A$

Hence, rms value of current, $I = \frac{I_0}{\sqrt{2}} = \frac{-11.63}{\sqrt{2}} = -8.22A$

(b) Potential difference across the inductor,

$$\begin{aligned}
 V_L &= I \times \omega L \\
 &= 8.22 \times 100 \text{ n} \times 80 \times 10^{-3} \\
 &= 206.61 \text{ V}
 \end{aligned}$$

Potential difference across the capacitor,

$$\begin{aligned}
 V_C &= I \times \frac{1}{(i)C} \\
 &= 8.22 \times \frac{1}{100\pi \times 60 \times 10^{-6}} = 436.3V
 \end{aligned}$$

(c) Average power consumed by the inductor is zero as actual voltage leads the current by $\frac{\pi}{2}$.

(d) Average power consumed by the capacitor is zero as voltage lags current by $\frac{\pi}{2}$.

(e) The total power absorbed (averaged over one cycle) is zero.

11. Suppose the circuit in Exercise 7.18 has a resistance of 15Ω . Obtain the average power transferred to each element of the circuit, and the total power absorbed.

Ans. Average power transferred to the resistor = 788.44 W

Average power transferred to the capacitor = 0 W

Total power absorbed by the circuit = 788.44 W

Inductance of inductor, $L = 80 \text{ mH} = 80 \times 10^{-3} \text{ H}$

Capacitance of capacitor, $C = 60 \mu\text{F} = 60 \times 10^{-6} \text{ F}$

Resistance of resistor, $R = 15 \Omega$

Potential of voltage supply, $V = 230 \text{ V}$

Frequency of signal, $\nu = 50 \text{ Hz}$

Angular frequency of signal, $\omega = 2\pi \times (50) = 100\pi \text{ rad/s}$

The elements are connected in series to each other. Hence, impedance of the circuit is given as:

$$Z = \sqrt{R^2 + \left(\omega L - \frac{1}{\omega C} \right)^2}$$
$$= \sqrt{(15)^2 + \left(100\pi(80 \times 10^{-3}) - \frac{1}{(100\pi \times 60 \times 10^{-6})} \right)^2}$$

$$= \sqrt{(15)^2 + (25.12 - 53.08)^2} \cdot 31.728 \Omega$$

Current flowing in the circuit,

$$I = \frac{V}{Z} = \frac{230}{31.728} = 7.25 A \quad I = \frac{V}{Z} = \frac{230}{31.728} = 7.25 A$$

Average power transferred to resistance is given as:

$$P_R = I^2 R = (7.25)^2 \times 15 = 788.44 \text{ W}$$

Average power transferred to capacitor, P_C = Average power transferred to inductor, $P_L = 0$

Total power absorbed by the circuit:

$$= P_R + P_C + P_L$$

$$= 788.44 + 0 + 0 = 788.44 \text{ W}$$

Hence, the total power absorbed by the circuit is 788.44 W.

12. A series LCR circuit with $L = 0.12 \text{ H}$, $C = 480 \text{ nF}$, $R = 23 \Omega$ is connected to a 230 V variable frequency supply.

(a) What is the source frequency for which current amplitude is maximum. Obtain this maximum value.

(b) What is the source frequency for which average power absorbed by the circuit is maximum. Obtain the value of this maximum power.

(c) For which frequencies of the source is the power transferred to the circuit half the power at resonant frequency? What is the current amplitude at these frequencies?

(d) What is the Q-factor of the given circuit?

Ans. Inductance, $L = 0.12 \text{ H}$

Capacitance, $C = 480 \text{ nF} = 480 \times 10^{-9} \text{ F}$

Resistance, $R = 23 \Omega$

Supply voltage, $V = 230 \text{ V}$

Peak voltage is given as:

$$V_0 = \sqrt{2} \times 230 = 325.22 \text{ V}$$

(a) Current flowing in the circuit is given by the relation,

$$I_0 = \frac{V_0}{\sqrt{R^2 + \left(\omega L - \frac{1}{\omega C} \right)^2}}$$

Where,

I_0 = maximum at resonance

At resonance, we have

$$\omega L - \frac{1}{\omega C} = 0$$

Where,

ωR = Resonance angular frequency

$$\therefore \omega R = \frac{1}{\sqrt{LC}}$$

$$= \frac{1}{\sqrt{0.12 \times 480 \times 10^{-9}}} = 4166.67 \text{ rad / S}$$

\therefore Resonant frequency,

$$v_R = \frac{\omega R}{2\pi} = \frac{4166.67}{2 \times 3.14} = 663.48 \text{ Hz}$$

And, maximum current

$$(I_0)_{\text{max}} = \frac{V_0}{R} = \frac{325.22}{23} = 14.14 \text{ A}$$

(b) Maximum average power absorbed by the circuit is given as:

$$(P_{av})_{Max} = \frac{1}{2} (I_0)_{Max}^2 R$$

$$= \frac{1}{2} \times (14.14)^2 \times 23 = 2299.3W$$

Hence, resonant frequency (V_R) is $663.48 Hz$

(c) The power transferred to the circuit is half the power at resonant frequency.

Frequencies at which power transferred is half, = $(1)_R \pm \Delta(1)$

$$= 2\pi(v_R \pm \Delta v)$$

Where,

$$\Delta(i) = \frac{R}{2L}$$

$$= \frac{23}{2 \times 0.12} = 95.83 \text{ rad / s}$$

Hence, change in frequency,

$$\Delta v = \frac{1}{2\pi} \Delta(1) = \frac{95.83}{2\pi} = 15.26 Hz$$

$$\therefore v_R + \Delta v = 663.48 + 15.26 = 678.74 Hz$$

$$\text{And, } v_R - \Delta v = 663.48 - 15.26 = 648.22 Hz$$

Hence, at 648.22 Hz and 678.74 Hz frequencies, the power transferred is half.

At these frequencies, current amplitude can be given as:

$$I' = \frac{1}{\sqrt{2}} \times (I_0)_{Max}$$

$$= \frac{14.14}{\sqrt{2}} = 10A$$

(d) Q-factor of the given circuit can be obtained using the relation,

$$Q = \frac{(i)_R L}{R}$$
$$= \frac{4166.67 \times 0.12}{23} = 21.74 \text{ s}$$

Hence, the Q-factor of the given circuit is 21.74.

13. Answer the following questions:

(a) In any ac circuit, is the applied instantaneous voltage equal to the algebraic sum of the instantaneous voltages across the series elements of the circuit? Is the same true for rms voltage?

(b) A capacitor is used in the primary circuit of an induction coil.

(c) An applied voltage signal consists of a superposition of a dc voltage and an ac voltage of high frequency. The circuit consists of an inductor and a capacitor in series. Show that the dc signal will appear across C and the ac signal across L .

(d) A choke coil in series with a lamp is connected to a dc line. The lamp is seen to shine brightly. Insertion of an iron core in the choke causes no change in the lamp's brightness. Predict the corresponding observations if the connection is to an ac line.

(e) Why is choke coil needed in the use of fluorescent tubes with ac mains? Why can we not use an ordinary resistor instead of the choke coil?

Ans. (a) Yes; the statement is not true for rms voltage

It is true that in any ac circuit, the applied voltage is equal to the average sum of the instantaneous voltages across the series elements of the circuit. However, this is not true for rms voltage because voltages across different elements may not be in phase.

(b) High induced voltage is used to charge the capacitor. A capacitor is used in the primary circuit of an induction coil. This is because when the circuit is broken, a high induced voltage is used to charge the capacitor to avoid sparks.



(c) The dc signal will appear across capacitor C because for dc signals, the impedance of an inductor (L) is negligible while the impedance of a capacitor (C) is very high (almost infinite). Hence, a dc signal appears across C . For an ac signal of high frequency, the impedance of L is high and that of C is very low. Hence, an ac signal of high frequency appears across L .

(d) If an iron core is inserted in the choke coil (which is in series with a lamp connected to the ac line), then the lamp will glow dimly. This is because the choke coil and the iron core increase the impedance of the circuit.

(e) A choke coil is needed in the use of fluorescent tubes with ac mains because it reduces the voltage across the tube without wasting much power. An ordinary resistor cannot be used instead of a choke coil for this purpose because it wastes power in the form of heat.

14. A small town with a demand of 800 kW of electric power at 220 V is situated 15 km away from an electric plant generating power at 440 V. The resistance of the two wire line carrying power is 0.5Ω per km. The town gets power from the line through a 4000–220 V step-down transformer at a sub-station in the town.

(a) Estimate the line power loss in the form of heat.

(b) How much power must the plant supply, assuming there is negligible power loss due to leakage?

(c) Characterise the step up transformer at the plant.

Ans. Total electric power required,

$$P = 800 \text{ kW} = 800 \times 10^3 \text{ W}$$

Supply voltage, $V = 220 \text{ V}$

Voltage at which electric plant is generating power, $V' = 440 \text{ V}$

Distance between the town and power generating station, $d = 15 \text{ km}$

Resistance of the two wire lines carrying power = $0.5 \Omega / \text{km}$

Total resistance of the wires,

$$R = (15 + 15)0.5 = 15 \Omega$$



A step-down transformer of rating 4000 - 220 V is used in the sub-station.

Input voltage, $V_1 = 4000$ V

Output voltage, $V = 220$ V

Rms current in the wire lines is given as:

$$I = \frac{P}{V_1}$$
$$= \frac{800 \times 10^3}{4000} = 200 \text{ A}$$

(a) Line power loss = $I^2 R$

$$= (200)^2 \times 15$$

$$= 600 \times 10^3 \text{ W}$$

$$= 600 \text{ kW}$$

(b) Assuming that the power loss is negligible due to the leakage of the current:

Total power supplied by the plant

$$= 800 \text{ kW} + 600 \text{ kW}$$

$$= 1400 \text{ kW}$$

(c) Voltage drop in the power line

$$= IR = 200 \times 15 = 3000 \text{ V}$$

Hence, total voltage transmitted from the plant

$$= 3000 + 4000$$

$$= 7000 \text{ V}$$

Also, the power generated is 440 V.

Hence, the rating of the step-up transformer situated at the power plant is 440 V - 7000 V.

15. Do the same exercise as above with the replacement of the earlier transformer by a 40,000-220 V step-down transformer (Neglect, as before, leakage losses though this may not be a good assumption any longer because of the very high voltage transmission involved). Hence, explain why high voltage transmission is preferred?

Ans. The rating of a step-down transformer is 40000 V - 220 V.

Input voltage, $V_1 = 40000$ V

Output voltage, $V_2 = 220$ V

Total electric power required,

$$P = 800 \text{ kW} = 800 \times 10^3 \text{ W}$$

Source potential, $V = 220$ V

Voltage at which the electric plant generates power, $V' = 440$ V

Distance between the town and power generating station, $d = 15$ km

Resistance of the two wire lines carrying power = $0.5 \Omega / \text{km}$

Total resistance of the wire lines,

$$R = (15 + 15)0.5 = 15 \Omega$$

$$P = V_1 I$$

Rms current in the wire line is given as:

$$I = \frac{P}{V_1}$$
$$= \frac{800 \times 10^3}{40000} = 20 \text{ A}$$

(a) Line power loss = $I_1 R$

$$= (20)^2 \times 15$$

$$= 6 \text{ kW}$$

(b) Assuming that the power loss is negligible due to the leakage of current.

Hence, power supplied by the plant

$$= 800 \text{ kW} + 6 \text{ kW} = 806 \text{ kW}$$

(c) Voltage drop in the power line

$$= IR = 20 \times 15 = 300 \text{ V}$$

Hence, voltage that is transmitted by the power plant

$$= 300 + 40000 = 40300 \text{ V}$$

The power is being generated in the plant at 440 V.

Hence, the rating of the step-up transformer needed at the plant is

$$440 \text{ V} - 40300 \text{ V}.$$

Hence, power loss during transmission

$$= \frac{600}{1400} \times 100 = 42.8 \%$$

In the previous exercise, the power loss due to the same reason is $\frac{6}{806} \times 100 = 0.744 \%$. Since the power loss is less for a high voltage transmission, high voltage transmissions are preferred for this purpose.

